

Year	Date	Description	Amount	Balance
1702	14: 4 mo	To 4 loads of Bricks	£ 3 - - -	
	15	To 4 loads "	£ 3 - - -	
		To 5 loads " 2500	£ 3 - 12 - -	
	18	To 2 loads of Bricks	£ 1 - 8 - -	
	19	To 5 load Ditto 2500	£ 3 - 12 - -	
	19 6 mo	To 2 load Ditto	£ 1 - 10 - 0	
	20	To 2 loads Ditto	£ 1 - 10 - 0	
	26	To 2 loads Ditto	£ 1 - 8 - -	
	28	To 5 loads Ditto 2500	£ 3 - 12 - -	
	10: 7	To 3000 Ditto	£ 2 - 16 - -	
	17: 8	To 2 load of Ditto	£ 1 - 10 - -	
		To a load of Bricks	£ 0 - 15 - -	
	15	To 2 load	£ 1 - 10 - -	
	16	To 1 load	£ 0 - 15 - -	
	17	To 2 load	£ 1 - 6 - -	
1703.	12: 3 mo	To 1026 foot of Boards at 12 <sup>s</sup> @ 100.	£ 6 - 3 - -	
		To 506 foot of boards at 12 <sup>s</sup> @ 100	£ 3 - 0 - 6	
		To 842 foot of boards at 12 <sup>s</sup> @ 100	£ 5 - 1 - -	
1697	1: 10 mo	To a load of Bricks D <sup>r</sup> Widdow Charndler	£ - - 13 - -	
	21	To a thousand of Bricks	£ 1 - 7 - -	
	13: 5 mo	To 500 Bricks	£ - - 14 - -	
	16:	To 1000 Bricks	£ 1 - 8 - -	
	6: 7 mo	To 2000 Bricks	£ 2 - 16 - -	
	2: 8 mo	To 1500 Bricks	£ 2 - 2 - -	
	4	To 500 Bricks.	£ - - 14 - -	
1698	27: 2 mo	To a load of lime carried	£ 1 - 5 - -	
		To a load of bricks 400	£ - - 12 - -	
			£ 56 - 18 - 6	

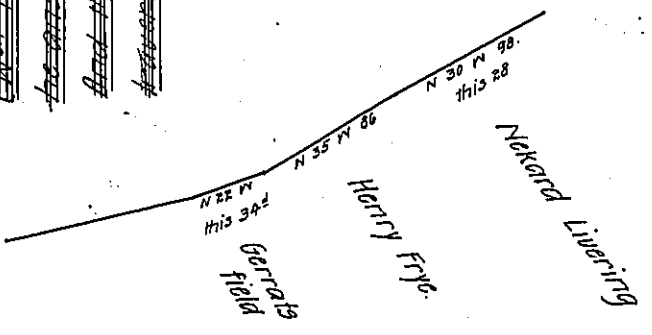
By pd to same Carpenter 20 - - -

Reggs Widdow Charges me DHE

~~Copy Henry John Everhams requests for by the time that shewes  
 as a good man John Cutler surveyor of Bucks County Ambridge  
 and his affidavit that he received the same in the year 1704  
 and that he had in relation to the execution of the office  
 in Survey of the town if he received the same in the year 1704  
 for the recovery of John Everhams land and asks that the  
 state of it  
 state that if after that date or receipt of the same he did  
 not and properly restored his claim in the whole township  
 of every line of the said Everhams land if he received the  
 cash he will not stop if he did not as the same is  
 the same no then take if ever he did not as the same is  
 and the land must yet be surveyed what it is to the state  
 of it~~

N<sup>o</sup> Penn Jun<sup>r</sup>  
 1704.  
 Copied

160  
 80  
 240  
 228  
 18



No. 112.